

# PHOTOVOLTAIC GLASS ENAMEL FOR SOLAR PANELS



**High Reflective  
White Enamel**



**Highly Transparent  
Color Enamel**



**High Reflective  
Black Enamel**

## Features

- Highly reflective
- Improve power generation efficiency
- Corrosion resistance
- Ball impact resistance
- Weather resistance
- Heavy metal free
- Qualify performance test
- SGS environmental protection certified

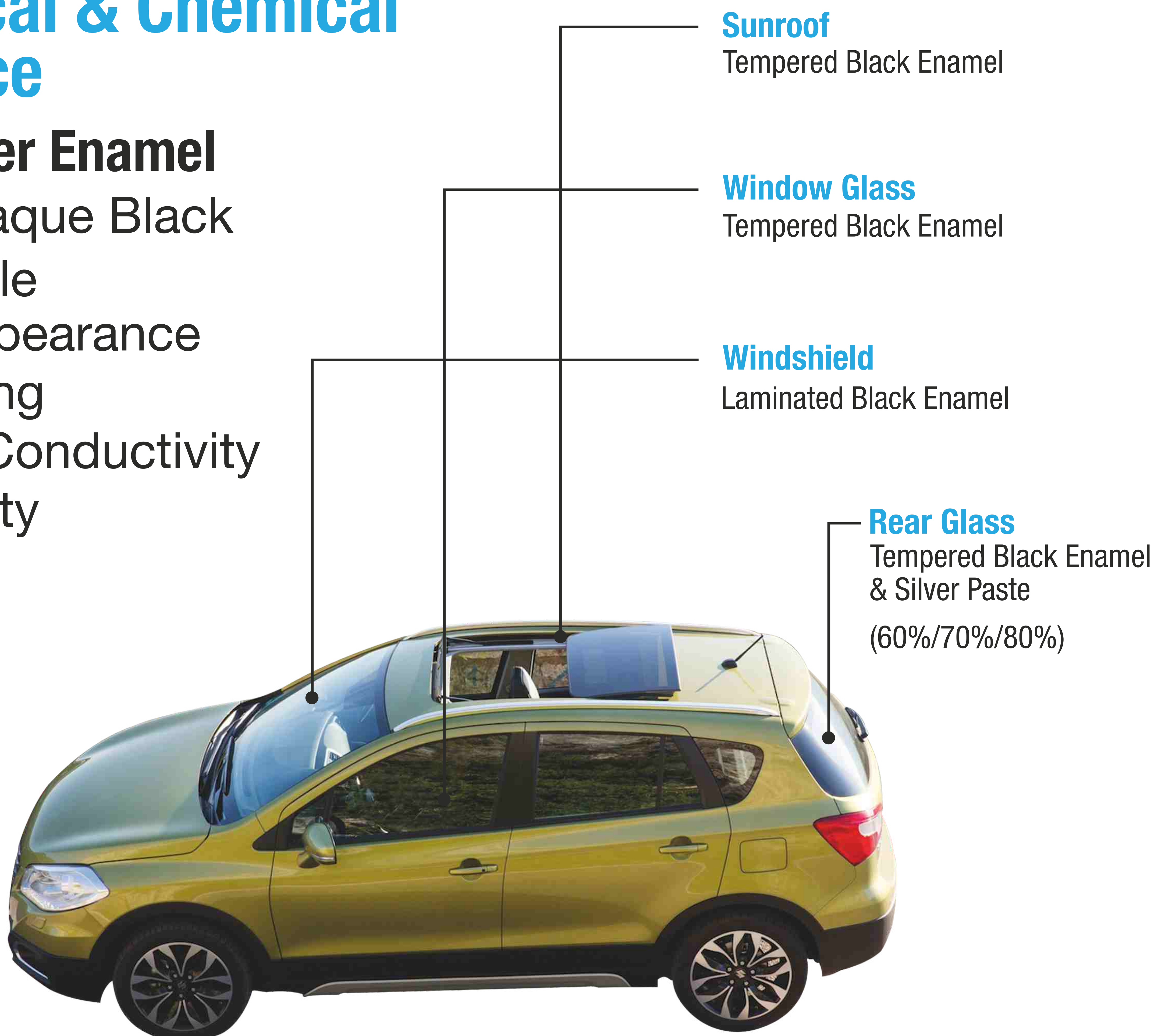


## Auto Glass Enamel

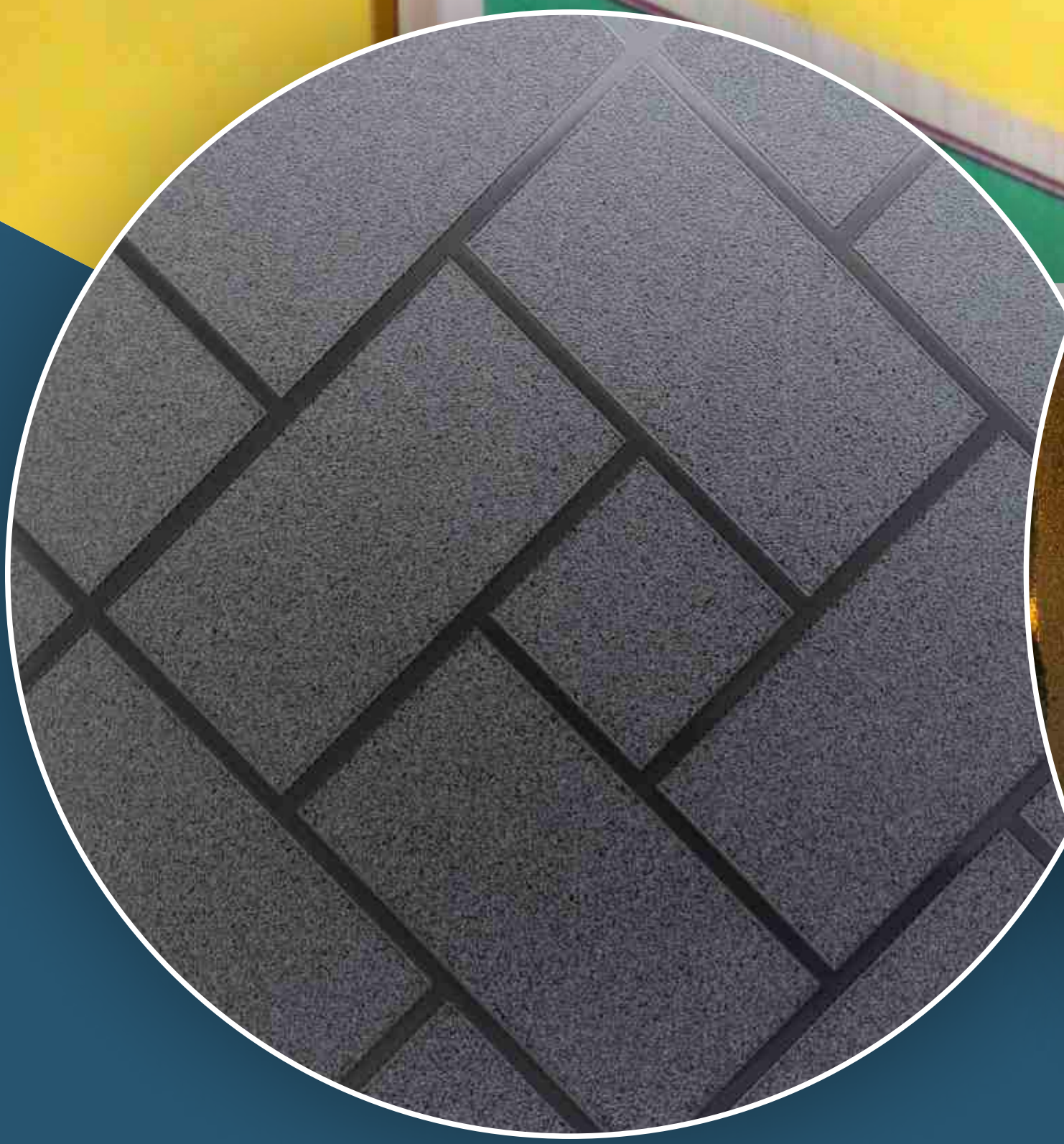
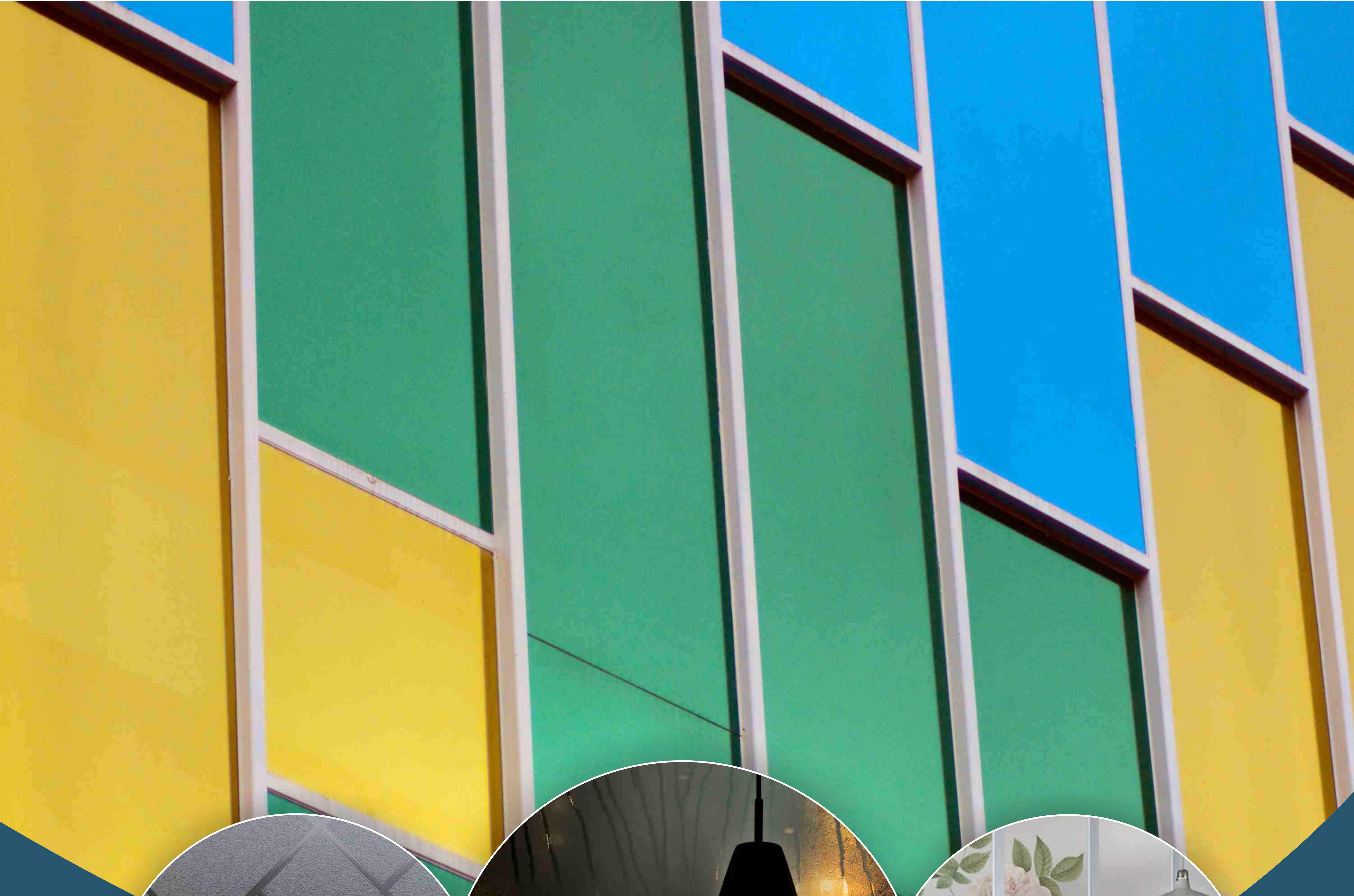
### Mechanical & Chemical Resistance

#### Black / Silver Enamel

- Highly Opaque Black
- Fine Particle
- Glossy Appearance
- Silver Hiding
- Electrical Conductivity
- Solderability



# GLASS INKS FOR ARCHITECTURAL INDUSTRY



Premium Quality Inks

## Decorative Glass Inks

- Water resistant
- Extremely durable
- High quality outcomes
- Iridescent inks
- Custom colors (Pantone/RAL)

## Functional Glass Inks

- Antiskid inks
- Photovoltaic Glass Enamel

# GLASS INKS FOR HOME APPLIANCES



Special Glass Inks



Premium Quality Inks



Glossy & Splendid  
Inks

## High Temperature Inks

- Impact resistance inks
- Qualify ball drop test
- Highly opaque
- Durable

## Low Temperature Inks

- Smooth printing
- Excellent adhesion
- Qualify mechanical & chemical resistance
- Meet RoHS compliance

# LOW TEMPERATURE GLASS DECORATIVE INKS



Touch Panels



Cosmetics



Beverages

## Mirror Ink

- Chrome like surface effect
- High end coating for car interiors, touch panels & electronics
- Qualify mechanical & chemical resistance

## Key Features

- Available in thermoplastic (flakes), powder & enamel
- Low & high temperature

## Series 7600

- Pad & screen printable
- One component & two component inks
- Low temperature curing
- RoHS compliance

# UV & EPOXY INKS FOR GLASS

INKS

MADE IN

GERMANY



Glass Touch  
Panels



Holloware/Glass  
Containers



Refrigerator / Microwave  
Glass Panel

## Hybrid UV Led Inks For Glass

- 2K / 3K inks based on glass resistance requirements.
- **REAL GOLD** inks for the glass industry.
- Very highly opaque inks.
- Ball impact resistance & outdoor fade resistant.
- Low pinholes over large patches.
- Expands & contracts with glass

# HIGH SPEED CNC SCREEN PRINTING MACHINES

MACHINES

MADE IN

GERMANY



Perfume Bottles



Cosmetic Bottles



Alcohol Bottles

## Features

- Up to 12 colors
- Glass, Ceramics, Plastics
- Tableware, Hollow ware, Beverage bottles, Cosmetic jars, Alcohol bottles
- Part shapes : Round, Oval, Square, Flat & Parts with handles
- Screen printing (UV inks, High temperature ceramic inks), digital printing, Hot foiling
- Extremely fast : up to 300 parts/minute
- Excellent print color registration of up to 0.1 mm

# SCREEN PRINTING MACHINES FOR PRINTING ON GLASS



Glass Touch  
Panels



Solar Panel Glass



Microwave / Refrigerator  
Glass Panel

## Automatic / Semi Automatic Screen Printing Machines for Printing on Glass